

Central Systems

120 VDC central single source emergency lighting system

Time and labour saver only one conduit required!

In an existing or new installation where exit signs and emergency lighting may be supplied by a single 120VDC source using a common negative wire, one normally on positive and one normally off positive. 3 wire output from the system reduces the number of conductors by up to 40%. It also eliminates 50% of the conduit, EMT or BX runs by using a single common conduit for LED exits and emergency lighting remotes.



Features

- Single-source 120 VDC supply for both exit and emergency lights
- Reduced number of conductors
- Eliminates 50% of conduit, BX or EMT runs for exit and emergency lighting
- Control and supervision functions on single modular board
- Complete package of full supervisory functions and alarms included in standard unit
- Floor-mount cabinet
- Battery is sealed maintenance free lead calcium
- All LumaSource Series systems are designed and manufactured in Canada
- CSA and Ontario Hydro approved
- BMEC (Building Materials Evaluation Commission) approved for compliance to the Ontario Building Code
- Overall reduction on power consumption using LED exit signs.



Operations

LUMASOURCE Series Central Emergency Lighting Systems are available in free-standing cabinet style enclosures.

- Heavy duty, sheet-steel cabinet.
- Cabinets are painted ASA No. 61 grey electrolyte resistant enamel.
- Locking and hinged front door.
- Front access to battery charger for ease of inspection and servicing.

Charger / Controls

Lumacell's solid state fully automatic charger features single module control board design. This feature provides cost effective superior performing equipment, with ease of maintenance and service ability.



LUMASOURCE

Standard Features and Controls

- LVD at 91% of nominal
- Temperature Compensation
- Ground Fault Alarm (Audible & Visual)
- AC input breaker
- DC Volt & Ammeter (2% Accuracy)
- AC present LED indicator
- Float level Charge LED indicator
- Equalize level Charge LED indicator
- Charger Failure Alarm
- AC Failure Alarm
- High Battery Voltage Alarm
- Test Switch
- Remote Monitor Alarm Panel
- Brownout Protection
- Dry Contacts
- BMEC - Ontario Building Materials Evaluation Commission Approved
- SPF - sprinkler-proof cabinet comes with drip shield

Optional Features Code

- | | |
|---------------------------------|-------------|
| - Time Delay | TD |
| - 3 Phase Sensing | 3PH |
| - 12 Hour Recharge | 12HR |
| - Battery exerciser | CYC |
| - Input battery circuit breaker | BCB |
| - Common Zone sensing | ZSC |

Application

New construction or retro-fit, the **LUMASOURCE** Series utilizes the latest technology and engineering to reduce the cost of emergency lighting installations. The unique 3 wire design allows for the use of just one conduit. With one positive dc normally energized conductor and a common negative conductor the LED exits are supplied constant power. With the same common negative conductor and another positive DC conductor the remote emergency lights are powered on demand. Available in sizes from 4120 watts to 22520 watts for 30 minutes. Other runtimes available. Please consult factory.

Electrical

Input: 120V, 208V, 240V, 347V, 600V AC 60 HZ Single Phase

Output: 120V DC (3 wire (normally on positive, common and normally off positive))

Systems have been designed for minimum 1/2 hour operation time and are capable of full recharge in 24 hours.

For systems rating chart and ordering guide please see Page 4 of this brochure. Other discharge times are available upon request.

Central Systems

120 VDC central single source emergency lighting system



Warranty

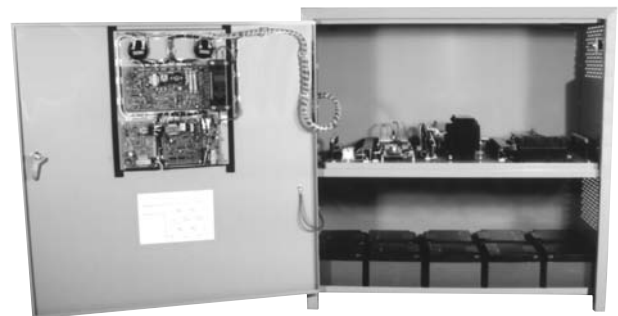
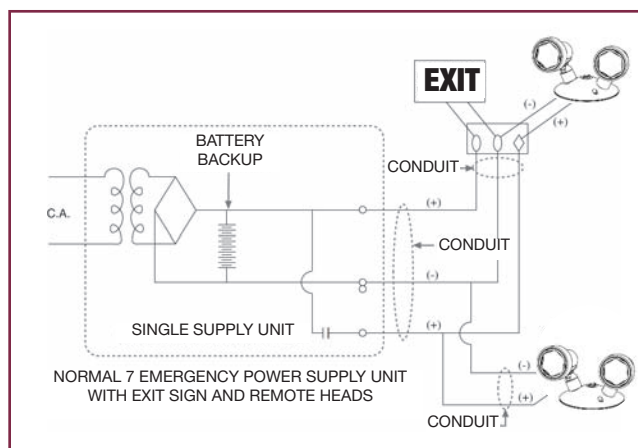
The **LUMASOURCE** system is warranted for one year against defects in workmanship and all electronic components.

The batteries are warranted 1 year complete and 9 years pro-rata against defects in workmanship and materials. Battery warranty is subject to proper testing and inspection as described in the Canadian Electrical Code, Section 46-102 & 46-104.

Approvals

- CSA Certified
- Ontario Hydro: Rule 46-108 (3)

Typical Interconnection Wiring Diagram



CAD Drawing illustrates how the **LUMASOURCE** Series is applied, saving time, material and money.

Call your local Lumacell Representative for further information, or application assistance.



LUMASOURCE

Enclosure Dimensions

System Series	Console H x W x D
LS 4120	38" (96,5 cm) x 38" (96,5 cm) x 18" (45,7 cm)
LS 9390-11260	38" (96,5 cm) x 38" (96,5 cm) x 28" (71,1 cm)
LS 13140-22520	56" (142,2 cm) x 38" (96,5 cm) x 28" (71,1 cm)

Units rating

SL Series batteries : maintenance free, sealed lead-calcium.
Watts at 91% of nominal voltage.

System Series	30 min.	1h00	1h30	2h00
LS4120	4120	2450	1790	1440
LS9390	9390	5590	4080	3290
LS11260	11260	6700	4890	3940
LS13140	13140	7820	5710	4600
LS18780	18780	11180	8160	6580
LS22520	22520	13480	9780	7880

Develop a Model Number as shown in the following chart

System Designation	Single Phase Input Voltage	Battery Type	Capacity in Watts*	Quantity of Exit Signs	Mounting	Output Voltage	Discharge Time (Minutes)	Optional Equipment
LS	120 Vac	SL Sealed Lead Calcium	Select from Battery Capacity chart in folder	100E	C = Console	120Vdc	30	TD
	208 Vac						60	3PH
	240 Vac						90	12HR
	347 Vac						120	CYC
	600 Vac							RRAP
							ZSC	
							BCB	
							For other discharge times please contact factory.	See page 2 for option details