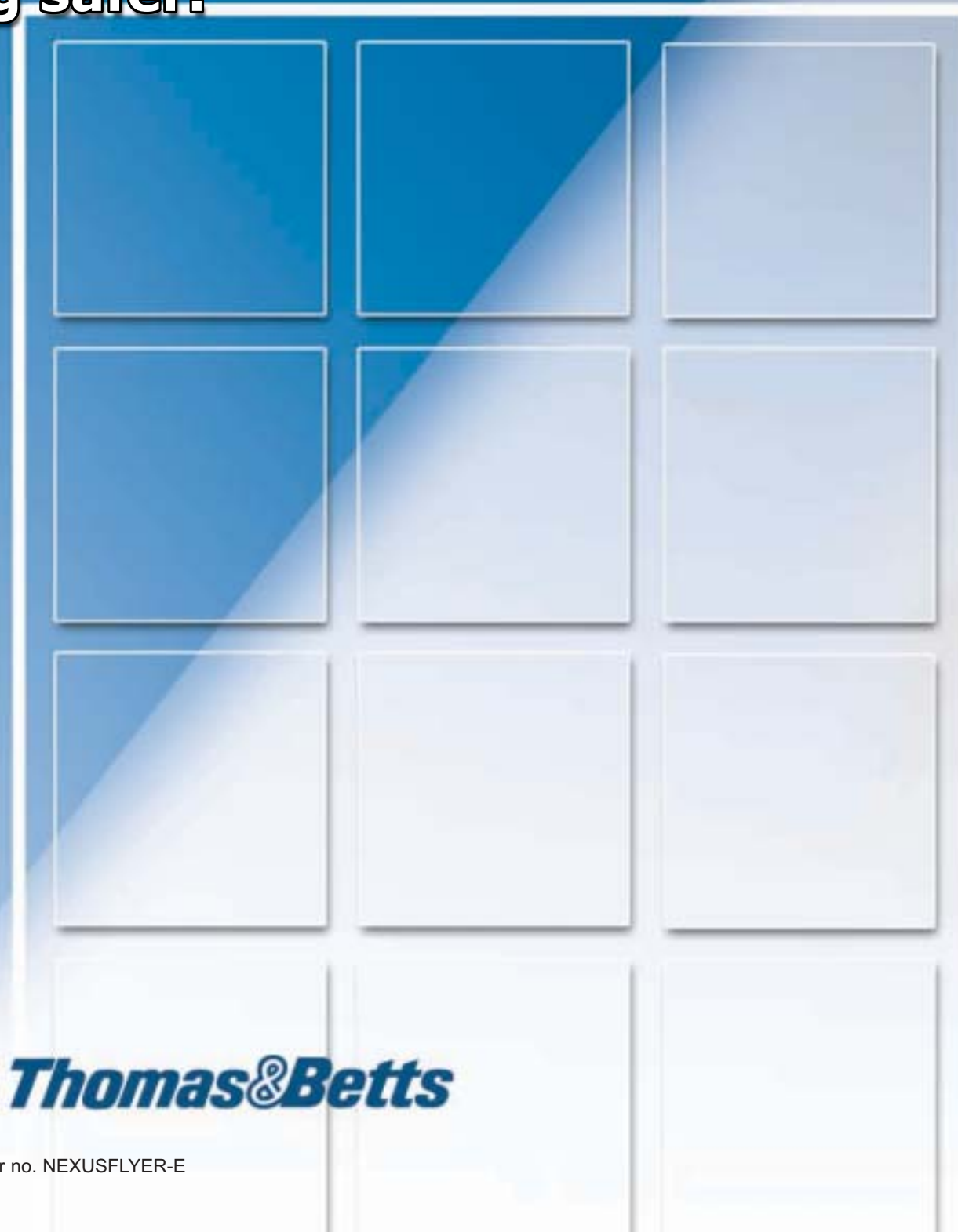


NE X US

NE X US

**Making your life easier  
and your building safer.**



Contact us:  
Tel.: (514)685-2277 ext.: 515  
Fax: (514)685-7389

**Thomas & Betts**

**Thomas & Betts**

*Leading the way!*



The **NEXUS** project started in Australia at Stanilite, a Thomas&Betts company. Following many successful installations “down under”, Thomas&Betts decided to adapt **NEXUS** to North American norms and specifications, as this system is a truly useful maintenance tool for property owners and managers.

### What is NEXUS?

“Connection between a linked series or group.”

Reference: <http://www.hyperdictionary.com/dictionary/nexus/>

For Thomas&Betts, **NEXUS** is a real-time network management system for emergency lighting and exit signs. It enables the user to manage the entire installation – installing and removing components, testing and monitoring the system and managing maintenance activities thus saving time and money on maintenance.

### How does NEXUS work?

The emergency light fixtures or Single Point Units (SPU) are connected together by a data cable and a router. Each SPU has a unique number registered in the **NEXUS** system.

To build a simple functional **NEXUS** network, you need to connect together:

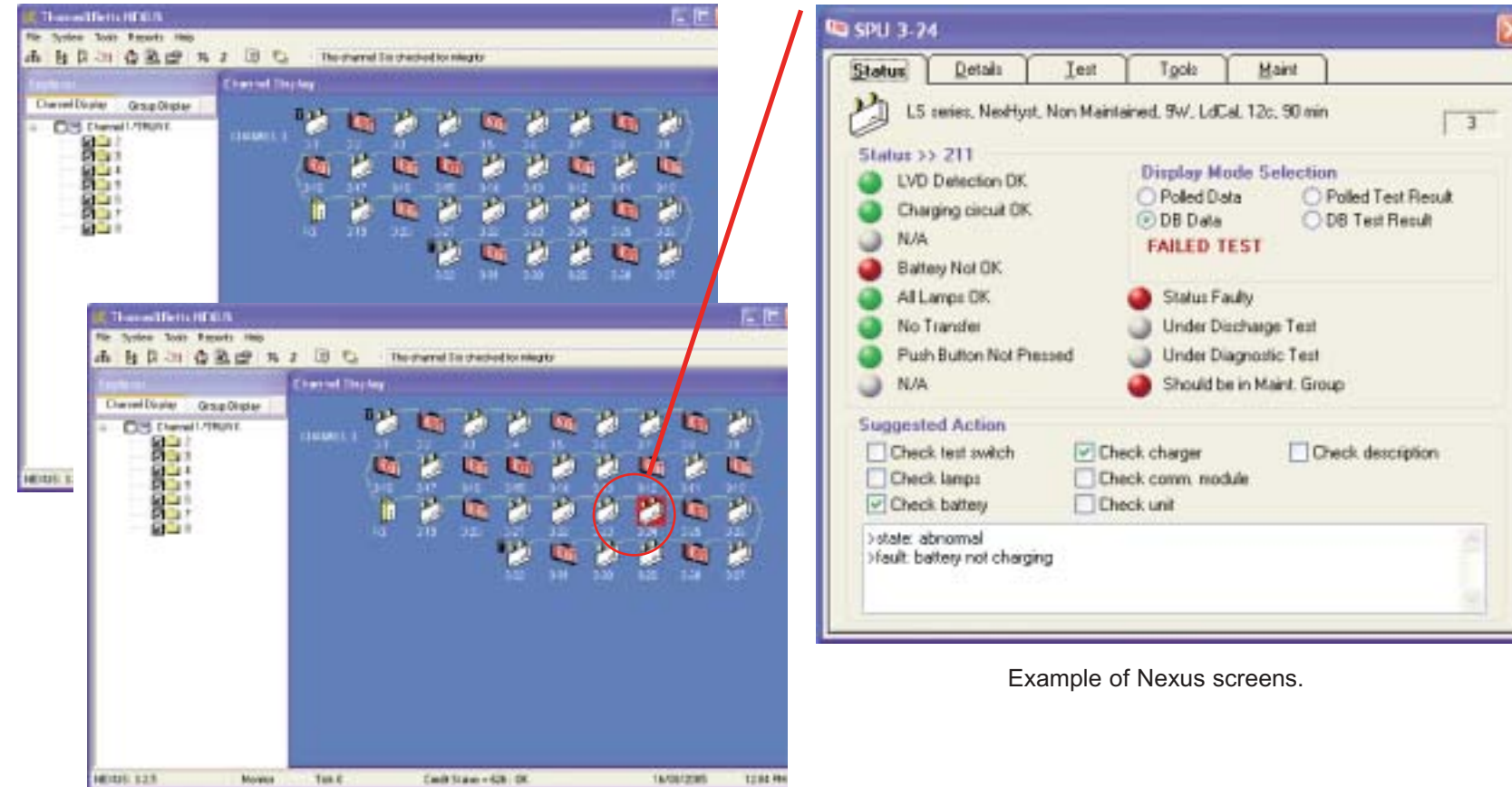
- a computer with an **Echelon** interface card for the communication
- twisted pair cables
- specific routers for the system
- **NEXUS** emergency light fixtures
- **NEXUS** Server which enables the user to perform the following tasks:
  - Schedule mandatory tests.
  - View test results with reports.
  - Maintain an electronic logbook.
  - Access diagnostic tools.

**NEXUS** is a laborsaving device that allows the testing of a building’s emergency lighting system from only one location. Maintenance personnel need only attend to the SPUs that need attention.

**NEXUS** can also link several buildings together, making the testing of the SPUs both quick and efficient.

The system operates in real-time, indicating any change of status of network components by changing their icon color in the **NEXUS** window. It can test and report on the status of the entire emergency lighting in an installation individually, in groups or all together.

**NEXUS** is self-monitoring and, in the event of loss of communication, can indicate the location of the fault down to the particular channel, which could save hours of manual faultfinding.



Example of Nexus screens.

The emergency lighting operation doesn’t depend on **NEXUS**. The device is simply used to monitor and remotely activate the SPUs without the need to physically go to each one of the units for testing. Of course, any physical maintenance such as cleaning and re-lamping must still be done manually.

**NEXUS** is the solution for reliable maintenance of your emergency lighting equipment. Ideal for hard to reach units or hazardous locations as well as multiple building management.

Wherever you are, you can depend on **NEXUS** to get the job done!