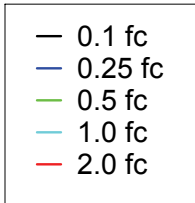
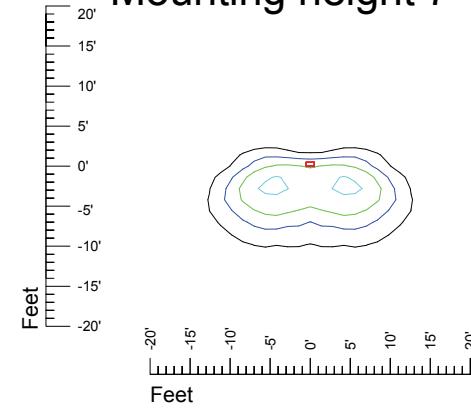


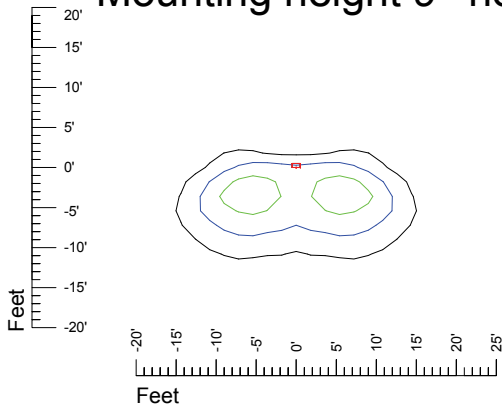
# Import the proper Iso-curves into your CAD drawing IES Photometric files A848 Iso curves in footcandles unit:feet



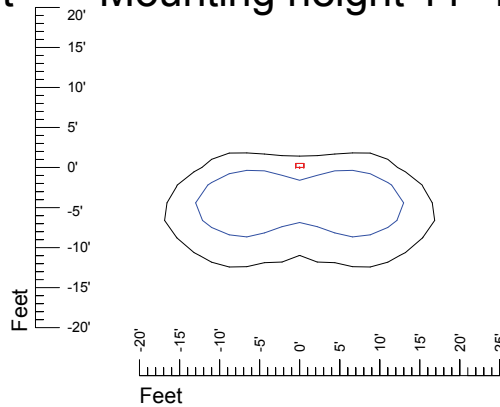
### Mounting height 7' no tilt



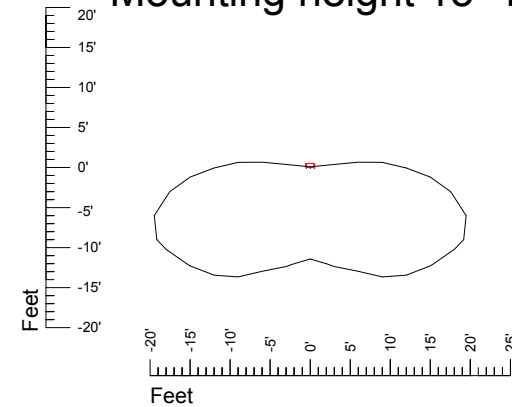
### Mounting height 9' no tilt



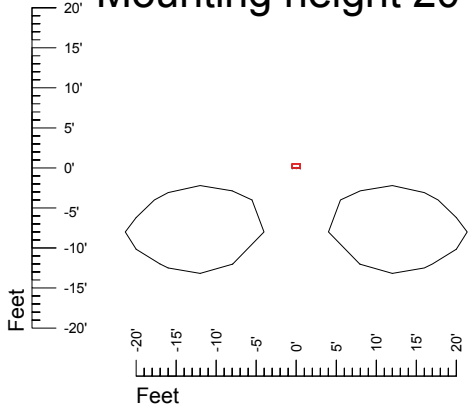
### Mounting height 11' no tilt



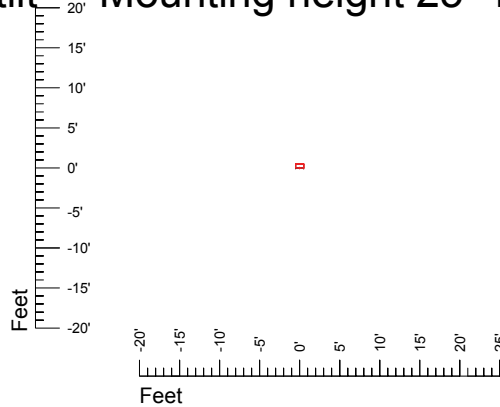
### Mounting height 15' no tilt



### Mounting height 20' no tilt



### Mounting height 25' no tilt



### Mounting height 30' no tilt

