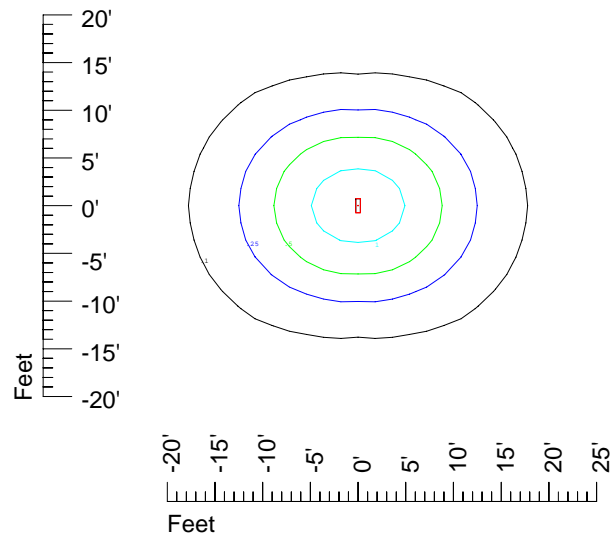


IES Photometric files CA122

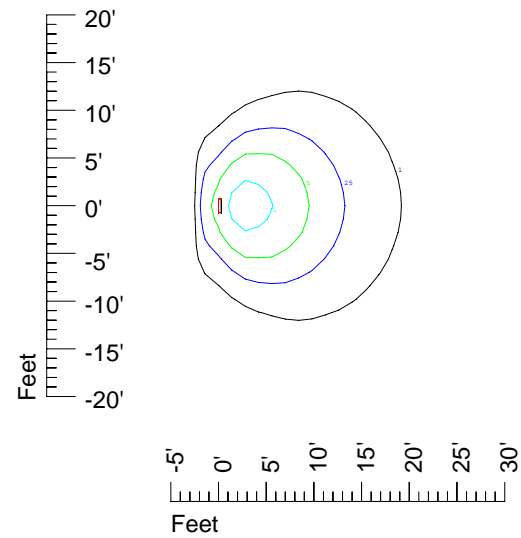
Isoline template

Isoline values — 0.1 fc — 0.25 fc — 0.5 fc — 1.0 fc — 2.0 fc

Ceiling mount
Mounting height 9' Tilt 0°



Wall mount Horizontal
Mounting height 7' Tilt 90°



Wall mount vertical
Mounting height 7' Tilt 90°

